



Motorized valves

Size(s): 1.25", 1.5" and 2"

DESCRIPTION

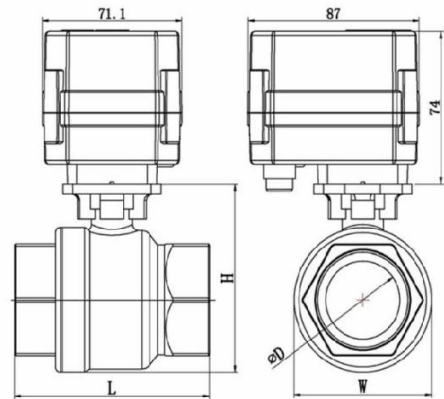
Motorized AKWA valves are used for drinking water systems and are designed to close the main water inlet when a leak is detected. The Stainless-steel valve is used as a main (or auxiliary valve) and controlled by an actuator (motor) which in turn is attached to the valve. Both the actuator and the valve come with a 3-YEAR warranty (1 year for labor and installation).

CHARACTERISTICS

Valve body (full port)

Model(s)	AKW-WVM-PS (1.25 or 1.5 or 2)
Valve Ball	304 Stainless Steel
Valve Stem	Brass Nickel Plated
Valve Seat	PTFE disc with backup ring
Valve Packing	Double O ring with PTFE friction ring base
Close Off	232 psi and 100% tight shut off
Pressure (max)	232 psi (16 Bar or 1.6 MPa)
Body rating	290 psi at 21 degrees (PN 20)
Media Temperature	32 ° F to 200 ° F (0 ° C to 92 ° C)

Compliance
CSA B125.3, NSF/ANSI/CAN 61



Diam.	Length	Height	Weight
32 mm / 1,25"	93 mm	84 mm	1,43 Kg
40 mm / 1,50"	102 mm	91 mm	1,72 Kg
50 mm / 2,00"	118 mm	112 mm	2,16 Kg

Actuator

Model	N/A. Delivered with valve body
Rated Voltage	12VDC
Power	Max 18 watts
Output Torque	88in/lb (10 NM)
Enclosure	NEMA 4 (IP 67)
Connection	12" (305mm), 1 x RJ 11 jack
Ambient Temperature	40 ° F to 120 ° F, (5 ° C to 50 ° C)
Travel Time	< 5 seconds
Noise Level	55 dB

Features include :

- Valve position indicator (close or open)
- Manual valve opening on actuator. In case of electrical supply failure, press down knob (about 1/4 inch) located under the actuator and rotate handle located on top of the actuator (left or right) to open /close the valve and release knob when completed
- Weekly self-test prevents calcium deposits in the mechanism and ensures its proper functioning.
- Temperature detection